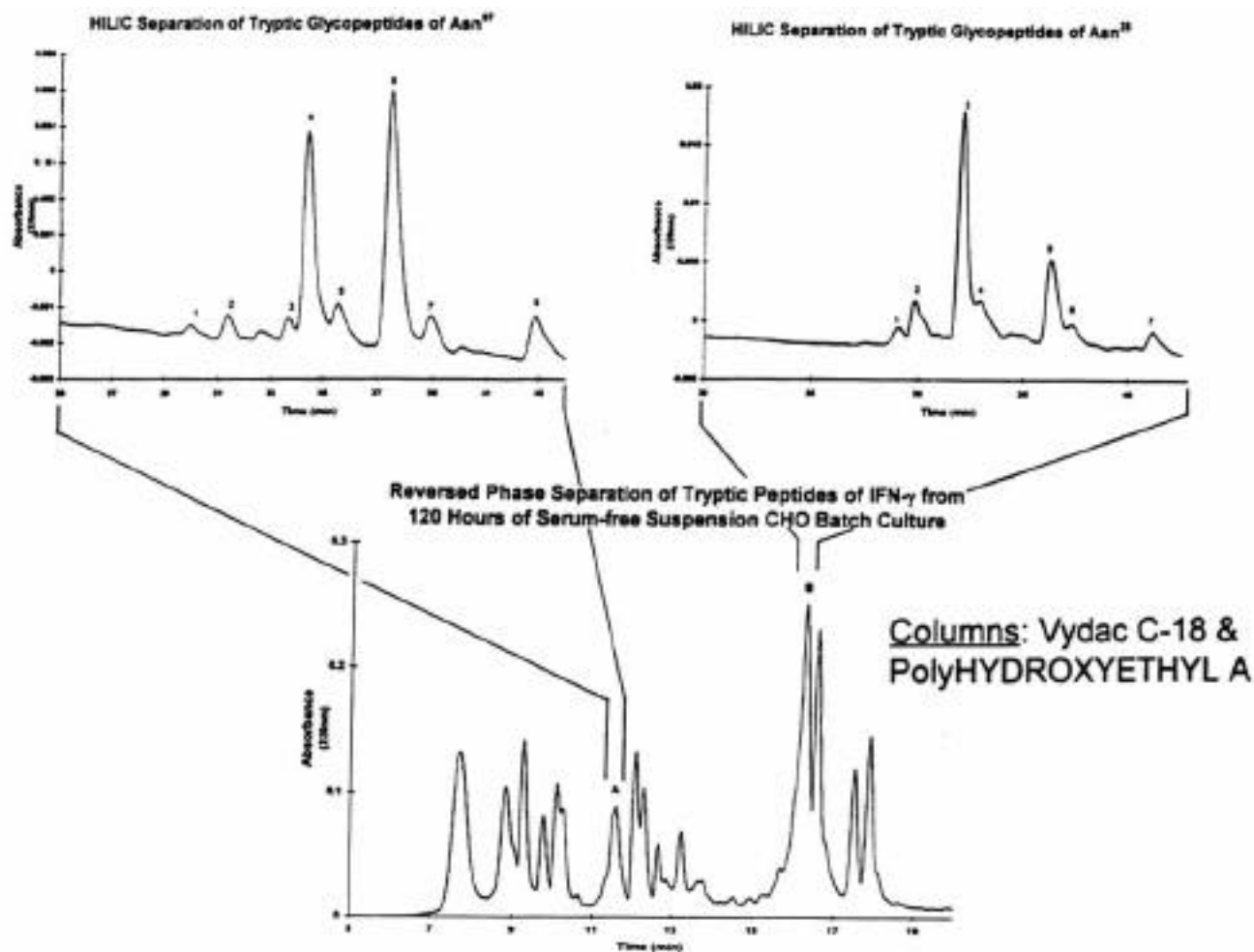


HYDROPHILIC INTERACTION CHROMATOGRAPHY

RPC/HILIC Purification of Glycopeptides from a Tryptic Digest of γ -Interferon



The two glycopeptide peaks in the RPC run were collected and rerun via HILIC. Each peak proved to consist of a family of peptides, all with the same peptide sequence but differing by a single carbohydrate residue from neighboring peptides. This is an example of the exceptional selectivity of HILIC for variations involving polar residues.

Data courtesy of J. Zhang & D. Wang (MIT)

The Nest Group, Inc.

TEL# 800-347-6378 or TEL# 508-481-6223

FAX# 508-485-5736

45 Valley Road, Southboro, MA 01772

WWW URL <http://world.std.com/~nestgrp>

email: nestgrp@world.std.com